



Scan this code
for video
collection
instructions

PHARMACOGENOMICS (PGX) PROFILE

Collection and Shipping Instructions

Materials Included

- 1 order form*
 - 2 barcode labels
 - 1 ORAcollect-DNA collection kit
 - 1 Parafilm® sealing sheet
 - 1 biohazard bag with absorbent sheet
 - 1 sample box
 - 1 shipping package with prepaid return label*
- *Some accounts may order electronically or use different sample return methods.*

Order



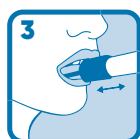
- Complete all fields on the included barcode labels and order form*.
- Place one of the completed barcode labels on the top right corner of the completed order form*.

Collect

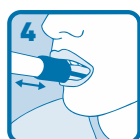
Before sample collection, the individual should not eat, drink, chew gum, or smoke for at least 30 minutes.



- Open the ORAcollect-DNA collection kit and remove the collection swab without touching the sponge tip.



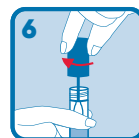
- Place the sponge tip inside of the right cheek. Rub the inside of the cheek for 30 seconds up and down while rotating the tube to ensure the entire sponge tip has made contact with the cheek; **do not** rub the gums and teeth.



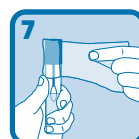
- Repeat on the inside of the left cheek.
- Carefully remove the swab from the mouth without touching the sponge tip.



- Holding the tube upright, unscrew the cap from the tube.



- Turn the cap upside down, insert the sponge into the tube and close tightly.

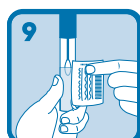


- Remove the backing from the Parafilm® sealing sheet and wrap it around the tube and cap to seal the tube.



- Invert the capped tube and shake vigorously 10 times.

Send



- Place one of the completed barcode labels vertically on the collection tube.



- Place the collection tube inside the biohazard bag and seal the bag.
- Place the completed order form* in the pouch of the biohazard bag.



- Place the biohazard bag in the included sample box.
- Put the sample box in the return package with prepaid shipping label* and seal the package.



- Return your sample using the shipping carrier listed on the prepaid label or as instructed by your institution.